

LED HIGH BAY LIGHT



OPERATION INSTRUCTION

Operation Instruction for LED high bay light

Thank you for your purchase! Before install the product, please read this instruction carefully, and keep it for further reference.

► Characteristics

1. Die-casting technology, ADC12 with 92% purity, thermal conductivity 96W/m*25℃, excellent thermal management
2. Integrated valve to balance internal and external pressure and humidity
3. Light transmittance up to 92%
4. IP65 ingress protection rating

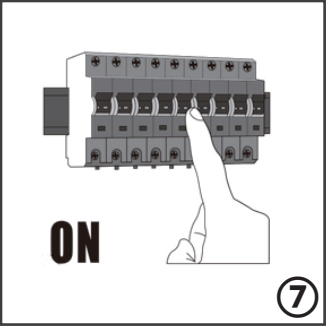
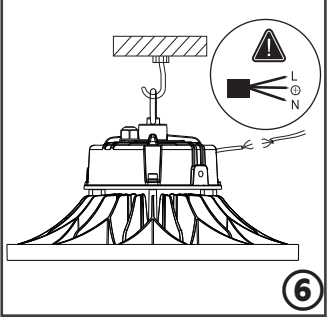
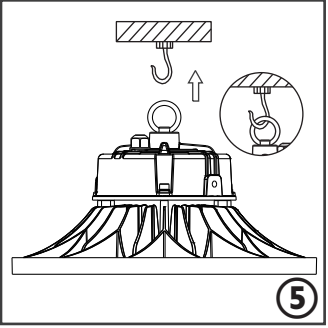
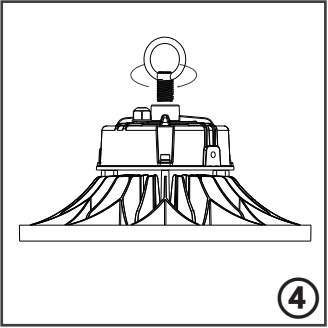
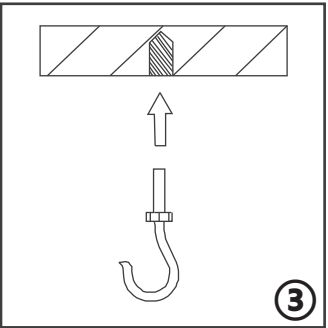
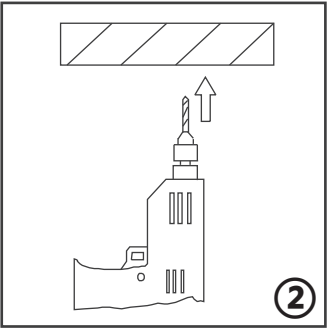
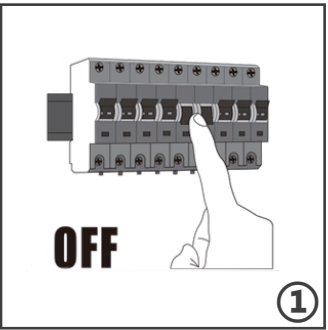
► Environment Requirement

Working Temperature: -35~+50℃
Storage Temperature: -35~+50℃
Working Humidity: 0%~85%
Storage Humidity: 0%~90%

► Product Information

Category	LED High bay light				
Wattage	100W	150W	200W	240W	300W
Light Efficacy	Up to 150lm/W				
Beam Angle	60°/ 90°/110°/ 120°				
Input Voltage	AC100-277V				
CCT	2700-6500K				
CRI	80				
Working Temperature	-35~+50℃				
Lifespan	50000H				
IP Grade	IP 66				

► Installation instruction :



Note : The installation base must be able to support 10 times weight of the products

Safety Instructions

► Becareful!



1. Please use the product in accordance to this instruction
2. Please do not replace components or modify lamps without authorization

► Attention

1. For your safety, please cut off the supply before install the product
2. For the well function, please choose the voltage within the range specified on the product.
3. To avoid damage to the eyes, do not stare at a LED Light source long time.
4. Please follow the correct installation steps to install this product, for your safety, please cut off the electricity before installation.

Thank You

For choosing